



Bid Notice Abstract

Request for Quotation (RFQ)

Reference Number 7836901
Procuring Entity METALS INDUSTRY RESEARCH & DEVELOPMENT CENTER
Title DELIVERY AND INSTALLATION OF DRY TYPE TRANSFORMER WITH ACCESSORIES
Area of Delivery Metro Manila

Solicitation Number:	21070639	Status	In-Preparation
Trade Agreement:	Implementing Rules and Regulations	Associated Components	2
Procurement Mode:	Negotiated Procurement - Small Value Procurement (Sec. 53.9)	Bid Supplements	0
Classification:	Goods	Document Request List	0
Category:	Electrical Systems and Lighting Components	Date Published	13/07/2021
Approved Budget for the Contract:	PHP 481,743.23	Last Updated / Time	12/07/2021 14:00 PM
Delivery Period:	60 Day/s	Closing Date / Time	16/07/2021 16:00 PM
Client Agency:			
Contact Person:	MARY GRACE BUCASAS OPON Administrative Officer I Gen. Santos Avenue Bicutan Taguig City Metro Manila Philippines 1631 63-2-8370431 Ext.444 63-2-8370430 bac@mirdc.dost.gov.ph		
Description			
SEE ATTACHED			
Other Information			
GOVERNMENT PAYMENT TERMS: BANK TRANSFER WITHIN 15 DAYS UPON RECEIPT OF GOODS/ SERVICES			

Created by MARY GRACE BUCASAS OPON
Date Created 12/07/2021

The PhilGEPS team is not responsible for any typographical errors or misinformation presented in the system. PhilGEPS only displays information provided for by its clients, and any queries regarding the postings should be directed to the contact person/s of the concerned party.

TERMS OF REFERENCE

Project Title: Establishment of Metals and Engineering Innovation Centers in Cordillera
Administrative Region (CAR), Regions I, II, III and X

Procurement of One (1) Lot Transformer and Accessories	
Approved Budget for the Contract (ABC): PhP 481,743.23	
Item	Technical Specifications
A. Power system components	
1. One (1) unit Step-up Transformer	
1.1. Capacity	100 kVA
1.2. Primary voltage	220V
1.3. Secondary Voltage	440V
1.4. Output power	3 Phase, 60 Hz with ground
1.5. Installation type	Floor mounted
1.6. Insulation type	Class H, indoor type with high grade silicon steel core at 150°C – 180°C
1.7. Winding type	Dry type, Copper winding
2. One (1) unit Busbar Gutter	
2.1. Capacity	600A
2.2. Output power	220VAC, 3 Phase, 60 Hz with ground
2.3. Insulation type	Cabinet enclosed metal insulation with door hinge
2.4. Material	100% Copper
3. One (1) unit Manual Transfer Switch	500 A, 3-Pole, 220 VAC, 60 Hz
B. Others	
1. Accessories	
1.1. Molded Case Circuit Breaker (MCCB) @ 250AT	One (1) unit) 250 AT, 400 AF, 42 KAIC, 3-Phase, 220VAC, 60 Hz
1.2. 3-Phase electrical wirings with ground - Y125	<ul style="list-style-type: none"> • One (1) set with at least 8 meters in length • Refer to Figure. 1 Electrical diagram, Y125 wire: Connected from Bus Bar Gutter to MCCB@250AT to Step-up Transformer.
1.3. 3-Phase electrical wirings with ground – Y200	<ul style="list-style-type: none"> • One (1) set with at least 8 meters in length • Refer to Figure. 1 Electrical diagram, Y200 wire: Connected from Manual Transfer Switch to Bus Bar Gutter
C. Delivery, installation, complete wiring set-up, commissioning and testing	<p>Delivered, installed and tested to Nueva Ecija University of Science and Technology (NEUST)-Region 3 Philippines: NEUST Sumacab Sur Campus, Cabanatuan City, Nueva Ecija, Philippines.</p> <p>The winning bidder shall provide the following:</p> <ul style="list-style-type: none"> • Labor, materials, equipment and tools during delivery, installation, complete wiring set-up, commissioning and testing. • Step-Up Transformer mounting and installation

TERMS OF REFERENCE

Project Title: Establishment of Metals and Engineering Innovation Centers in Cordillera
Administrative Region (CAR), Regions I, II, III and X

	<ul style="list-style-type: none"> • Busbar Gutter mounting and installation • Circuit Breaker mounting and installation • Manual Transfer Switch mounting and installation • Laying of complete power lay-out connections as shown in figure: Figure 1, Electrical Diagram <ul style="list-style-type: none"> ○ Tap Y125 3-Phase wiring (with ground) from Bus Bar to MCCB @ 250 AT, ○ Tap Y125 3-Phase wiring (with ground) from MCCB @ 250 AT to Step-up Transformer, ○ Tap Y200 3-Phase wiring (with ground) from Manual Transfer Switch to Busbar Gutter
D. Warranty	One (1) year on parts and service for all of the Electrical components
E. Acceptance	Delivered, installed and tested at site as witnessed by DOST-MIRDC personnel and/or authorized personnel.
Delivery, Installation and Commissioning Period	60 Calendar days
Operations and Maintenance Manual (English)	Included (If applicable)

Prepared by:



MERVIN B. GOROSPE
Senior SRS
MEIC, Project Staff

Checked by:



AGUSTIN M. FUDOLIG, Dr.Eng.
Deputy Executive Director, R&D
MEIC, Project Leader

Approved by:



ROBERTO O. DIZON
Executive Director

TERMS OF REFERENCE

Project Title: Establishment of Metals and Engineering Innovation Centers in Cordillera Administrative Region (CAR), Regions I, II, III and X

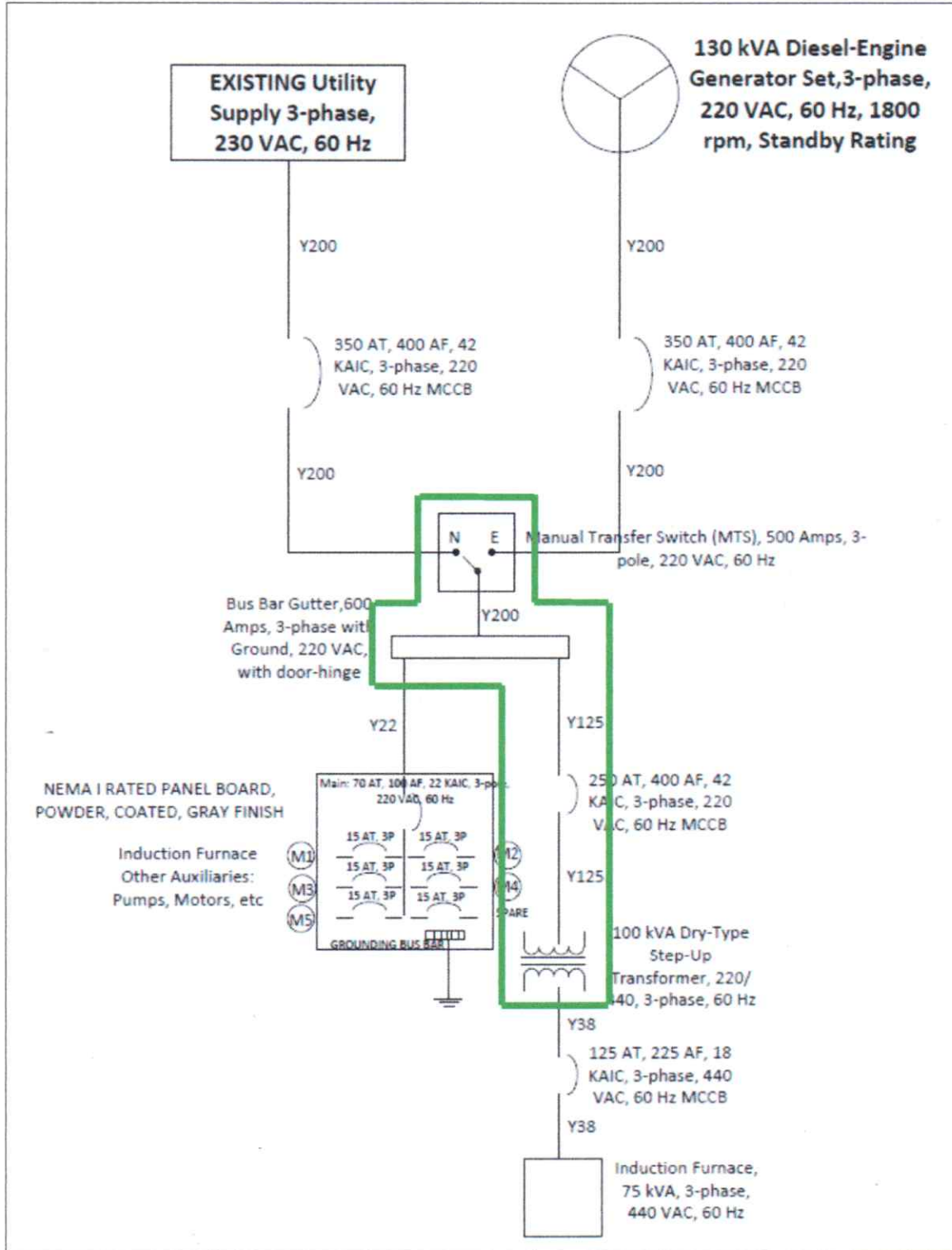


Figure 1: Electrical Diagram