



As cast trial castings ■ ■



Sample souvenir items ■ ■



Printed with funding support from:

Technology Application and
Promotion Institute (TAPI)

DOST Compound, Gen. Santos Avenue
Bicutan, Taguig City

Tel.: (632) 837-6188 • Fax: (632) 838-1127

website: <http://www.tapi.dost.gov.ph>



DEPARTMENT OF SCIENCE AND TECHNOLOGY
**METALS INDUSTRY RESEARCH
AND DEVELOPMENT CENTER**



Gen. Santos Ave., Bicutan, Taguig City



837 - 0431 to 38



837 - 0479



mirdc@dost.gov.ph



www.mirdc.dost.gov.ph



MICRO CUPOLA FURNACE



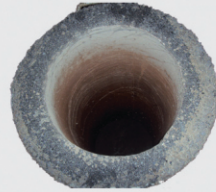
DEPARTMENT OF SCIENCE AND TECHNOLOGY
METALS INDUSTRY RESEARCH AND DEVELOPMENT CENTER



**MICRO CUPOLA
FURNACE**

Entrepreneurial
Educational

Simplicity in
Operation



State of the art
refractory systems

High performance refractory systems for minimal maintenance between campaigns, long campaign periods and high melt tonnage between refractory changes.



Simple design and
construction

Low cost fabrication, repair and maintenance.



Full control operation

Full instrumentation in blast air pressure and volume for repeatable results and operational flexibility.



Low cost operation

Minimal power requirement of the 2HP pressure blower.

Micro Cupola at a Glance

Specifications:

Inside Diameter:	250 mm
Total Height:	2690 mm
Shell Refractory Thickness:	64 mm
Blower:	2HP 220V 3Phase
Number of Nozzles:	4
Blast Air Pressure Control:	Yes
Number of Stack:	2

Performance and Requirements:

Melt Rate:	~ 180 kg / hr
Tap Weight:	~ 30 kg / tap / 10 min
*Cost per kg Melt:	~ P 80 / kg <i>(decreasing at longer campaigns)</i>

Coke Sizes:	> 1.5", < 3"
Charge Sizes:	up to 3" sizes
Starting Bed Coke:	~ 30 kg

* May change relative to cost of production materials.

Possible Applications



Souvenir Items Production

Educational Tool

- Low cost - investment can be as low as P 200K!
- Low maintenance - spout repair and bottom sand replacement only in between heats.
- Low operational cost - only 30 kg of starting bed coke.